

Parts needed to mount the OPAC-30 extrusion



Extrusion (A)



LED strip (B)



Cover (C)



Spring (D)

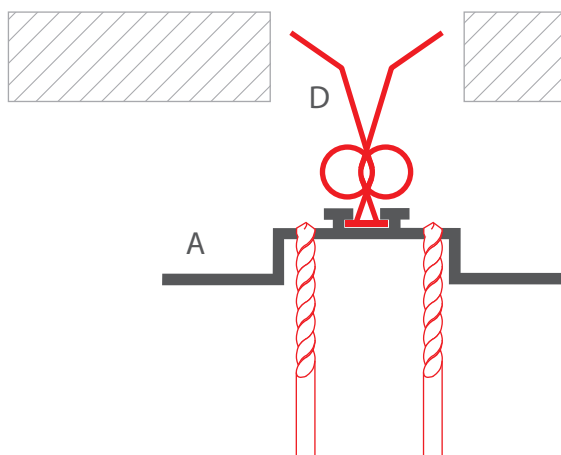


End cap (E)

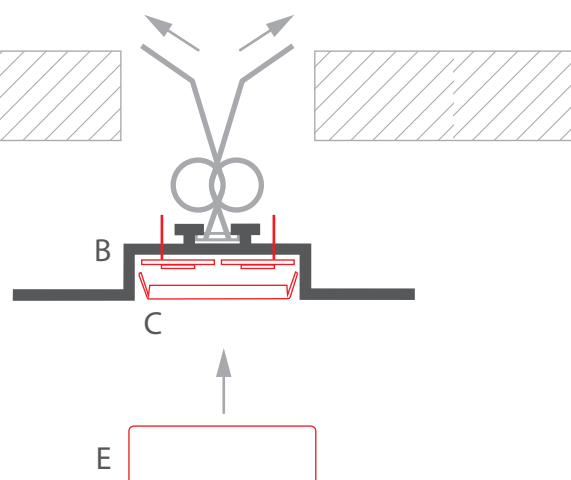
WARNING! All LED strips should be connected to a 12 V or 24 V power supply.

IMPORTANT: The mounting instructions present the basic form of assembly.
More methods and related accessories can be found at www.KlusDesign.eu

1. Drill a hole in the extrusion in where power cables are to be lead through. Insert the springs (D) into the extrusion (A).



2. Mount the LED strips (B), lead out the power cables, insert the cover (C), and then insert the end cap (E).



3. Place the extrusion in the groove and connect the LED power cable.

